

The Land Conservancy (TLC) Barbados

DEVELOPMENT OF A CONSERVATION AREA AT LONG POND, ST. ANDREW, BARBADOS

This brief outlines the TLC rationale and approach to developing a conservation area at Long Pond, St. Andrew, Barbados

Why a conservation area at Long Pond?

Long Pond and associated habitats represent a unique landscape feature and rare ecosystem in Barbados (figures 1 and 2). It is one of only three significant natural coastal wetlands on the island. The other two are Chancery Lane and Graeme Hall. Long Pond is an extremely valuable asset to the island's biodiversity. It is the only site in Barbados where the black mangrove is found. There is a diversity of fish and crustaceans and many migratory bird species use it. Leatherback sea turtles nest on the adjacent beach. Long Pond has long been identified as an area in need of special protection and as being suitable for a conservation area with light ecotourism use (Pennington 1983, GoB 1998).



The Long Pond area from the hill above Walkers Sand mine. The dune ecosystems and coastal woods extend beyond the picture to the right.

What do we aim to do?

The proposed approach is to be to establish a self-sustaining, community-based conservation area that will support local livelihoods and preserve the unique ecosystems of the area for future generations while contributing to the operationalization of the National Park.

What are the anticipated benefits?

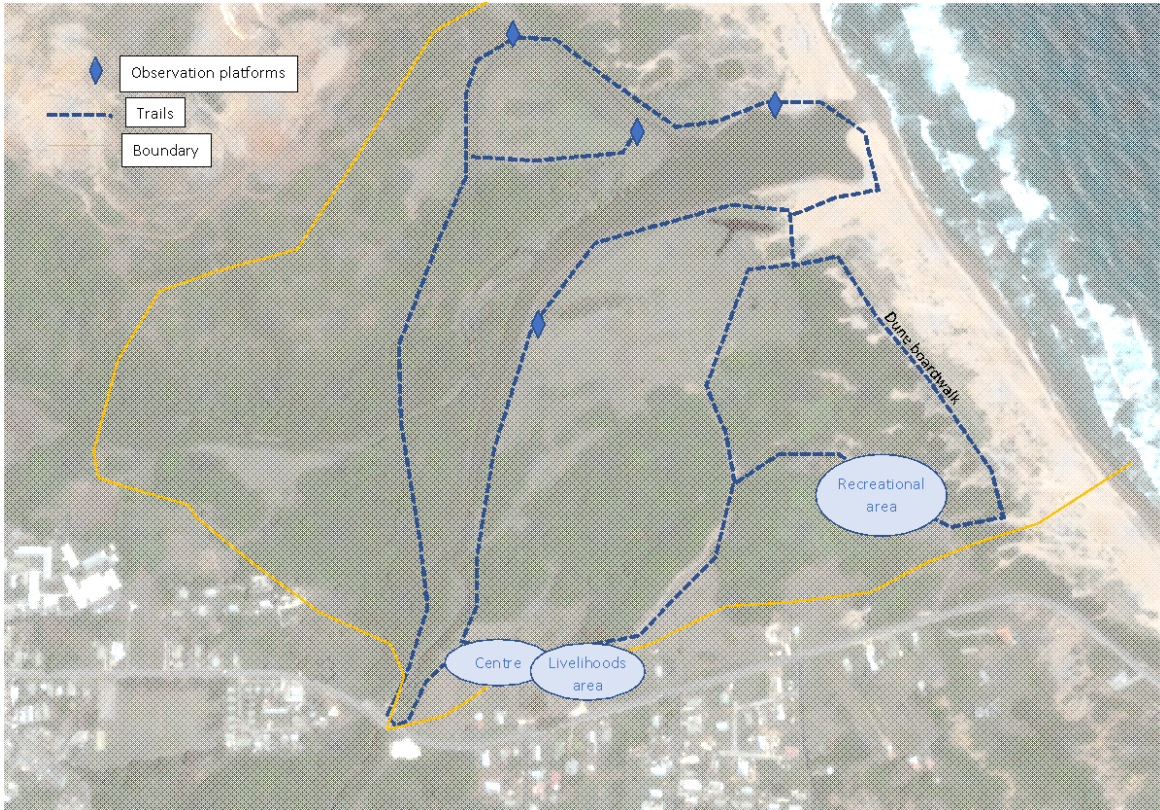
The proposed LPCA will:

- Conserve and enhance biodiversity
- Increase recreational opportunities for locals and visitors
- Provide livelihood opportunities for the local community
- Provide an ecotourism facility
- Support the development of the National Park

Some considerations

Self-sustainability will be a key component of LPCA planning. Some mechanisms to be considered include: admission fees, activities within the park, and concessions at the park centre site for goods and services that are consistent with the LPCA and National Park ethos.

Donor funding, especially associated with biodiversity and climate change adaptation and resilience, is anticipated.



A preliminary layout for the development of the Long Pond Conservation Area

How will we achieve this?

The following steps will be taken to proceed with this initiative:

- Engage with Government agencies and obtain endorsement of this approach
- Engage the Belleplaine community
- Engage major land owners
- Raise funds for land purchase
- Prepare outline development plan for TCPD, a management plan and a business plan.
- Raise funds for infrastructure development